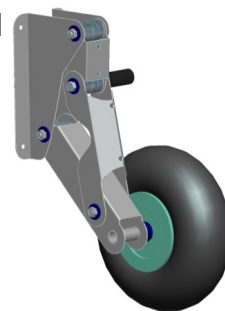


Launching wheels Link launcher

Design
protected



Acidproof stainless
steel
sea water quality.



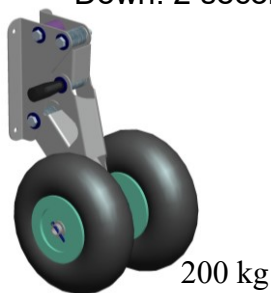
260 mm pneumatic
wheels move easily
on rough ground.

Not so deep below
bottom.
Easier launch with
"dry feet" on shallow
beaches.

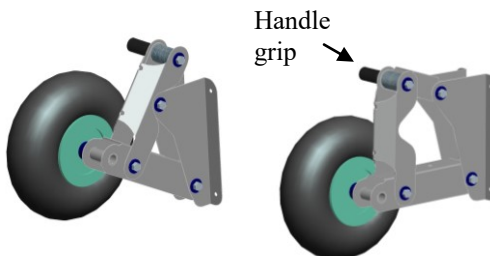
Convenient when
launching or hauling
when on your own.
Don't drag your boat on
rough surfaces, use
wheels instead.
Used on inflatable and
hard shell boats.

Up: 2 seconds
Down: 2 seconds

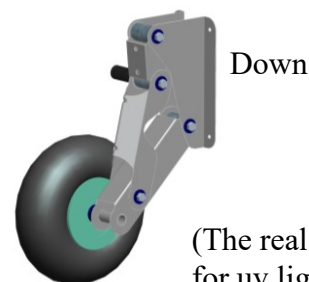
Self locking – no catches



Up



Handle
grip

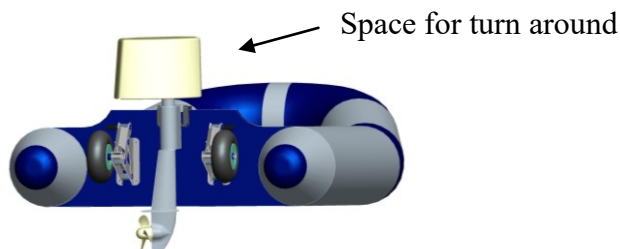


Down

(The real rim is black,
for uv light stability)

For boats up to:
80 kg
150 kg
200 kg

Can remain on transom without
obstructing. The motor is free
to turn around 180° during
reverse (for no-gear motors).



Space for turn around

Sales:

perneborn teknik

teknisk problemlösning och innovation

<http://www.perneborn.se>
robert@perneborn.se

Tips for assembly on boat

The choice of position height on the transom is made to position the wheels below the level of bottom of the boat in down position, and above the water in up position. For a flat bottom $A =$ approx. 100 - 120 mm from bottom edge of the transom to the lower edge of the bracket. For a V shaped bottom somewhat lower.

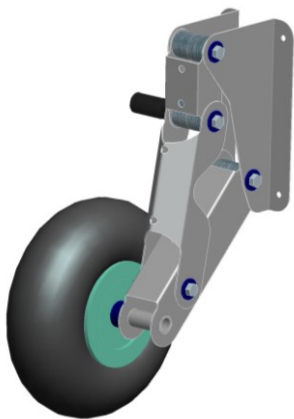
The mobility in the joints requires that the linkage bolts are not fully tightened. Lock nuts are fitted to prevent the joints from loosening. Check periodically the stability of the linkage and adjust the tightening when needed.

The load carrying ability of the design is depending on "clearence free" joints. Keep the joints as tight as possible without impairing the function. This adjustment is easiest when the set of wheels are on the transom. Some lubrication in the joints enables you to tighten "firmer" with kept mobility.

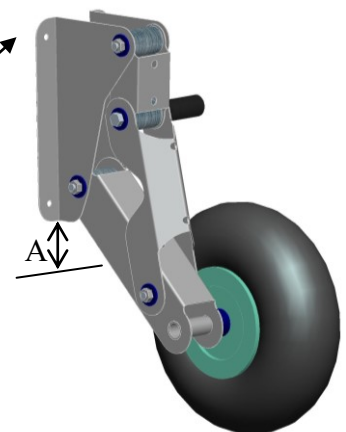
When the wheels are attached to an aluminium transom a thin coat of marine sealant (e.g. Sikaflex) is recommended, to isolate direct contact between stainless and aluminium. This will avoid galvanic corrosion.

Use common sense when putting load on the launcher. Although it has a rugged design a bumpy ground can give impact loads several times the weight of the boat. The launcher is only intended for manual (walking) transport. Have a good time with your launcher, and be careful not to get injured in the linkage mechanism.

Left wheel (mirrored to right)

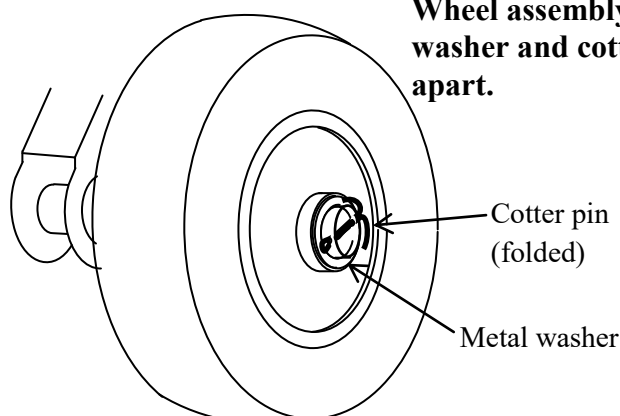


Right wheel position



Bolt to transom with stainless screw, nut and washer on both sides (6 mm for mod 80 and 150, and 8 mm for mod 200, not included). Use as large washers as possible for best stability. Adapt the length of the screws to the thickness of the transom. Don't forget to seal the holes below the waterline (silicon or marine sealant).

Wheel assembly with metal washer and cotter pin folded apart.



Details in the pictures might differ somewhat from the real thing

perneborn teknik
technical problem solving and innovation
<http://www.perneborn.se>
tel. +46706-640947

Thank you for using the perneborn Link launcher