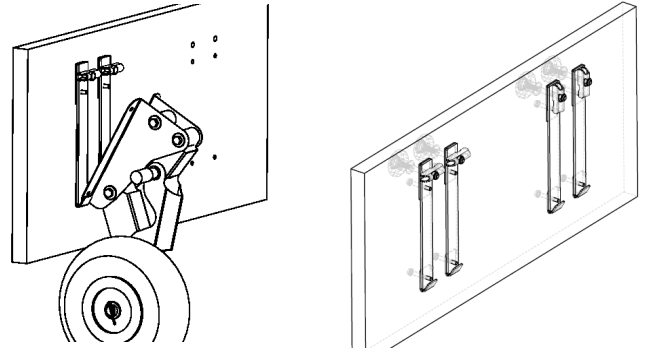


Quick release, Link Launcher[®]

Installation



Components included:

<p>4 Base plate (joined)</p>	<p>8 Screw M6x40 mm (for 25 mm thick transom)</p>	<p>4 Clamps (joined)</p>
<p>4 Upper spacer (joined)</p>	<p>8 Washer Ø6,4x12 mm</p>	<p>4 Star knob (with cover)</p>
<p>4 Lower bend plate (joined)</p>	<p>4 Washer Ø8,4x24 mm</p>	<p>1 Nut M6 (not stainless)</p>
<p>4 Screw M8x65 (or 80) mm</p>	<p>4 Lock nut M8</p>	

Installation:

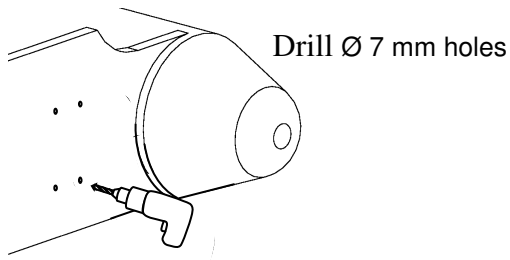
1. Break loose /part details

Break sharp edges with a file if wanted.

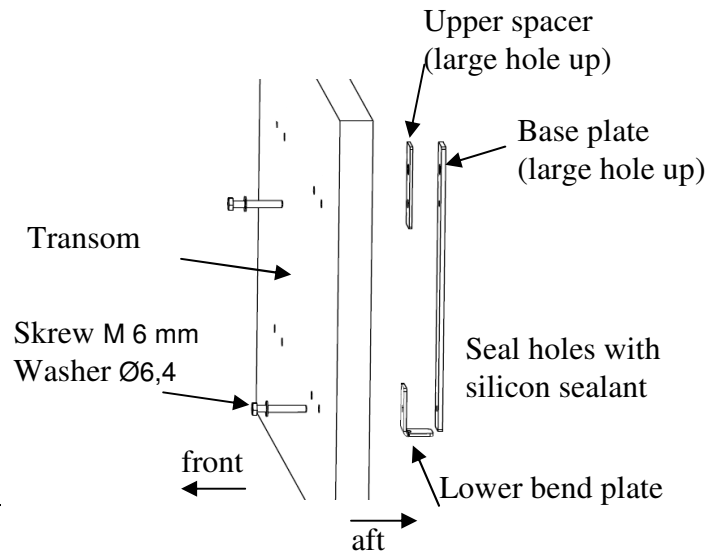
2. Mark position for the holes.

Place wheel bracket without quick release in correct position against transom and mark the holes. (Ensure enough space between wheels and tubes in "wheel up" position)

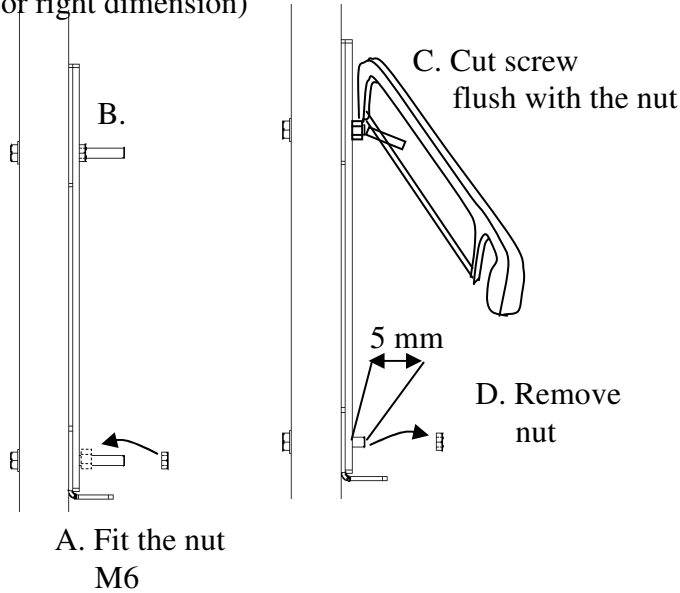
3. Drill



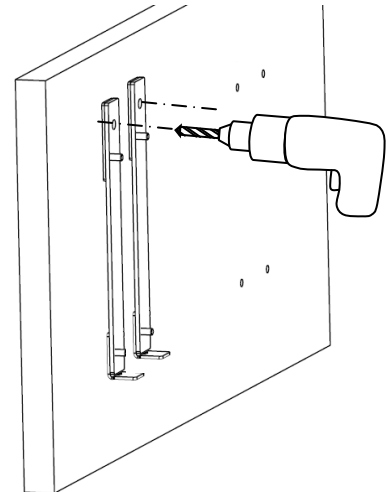
4. Fit the details



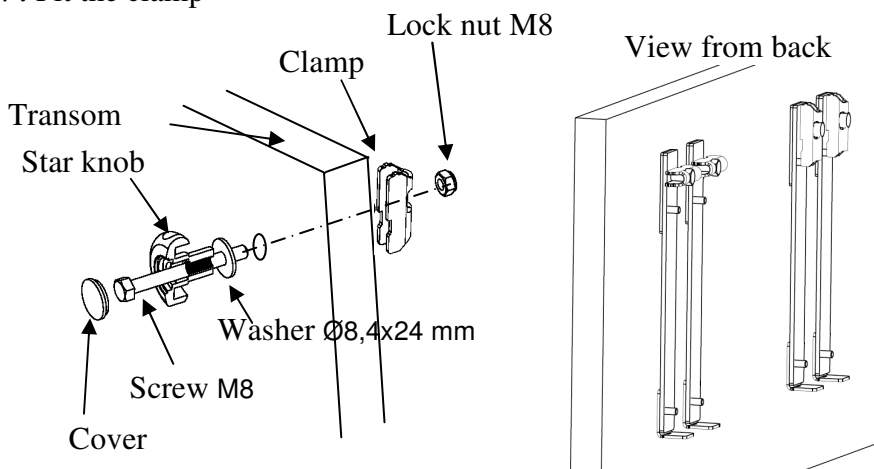
5. Cut screws to right length (protruding appr. 5 mm, nut can be used for right dimension)



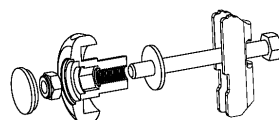
6. Drill Ø 8,5 mm through transom (upper holes)



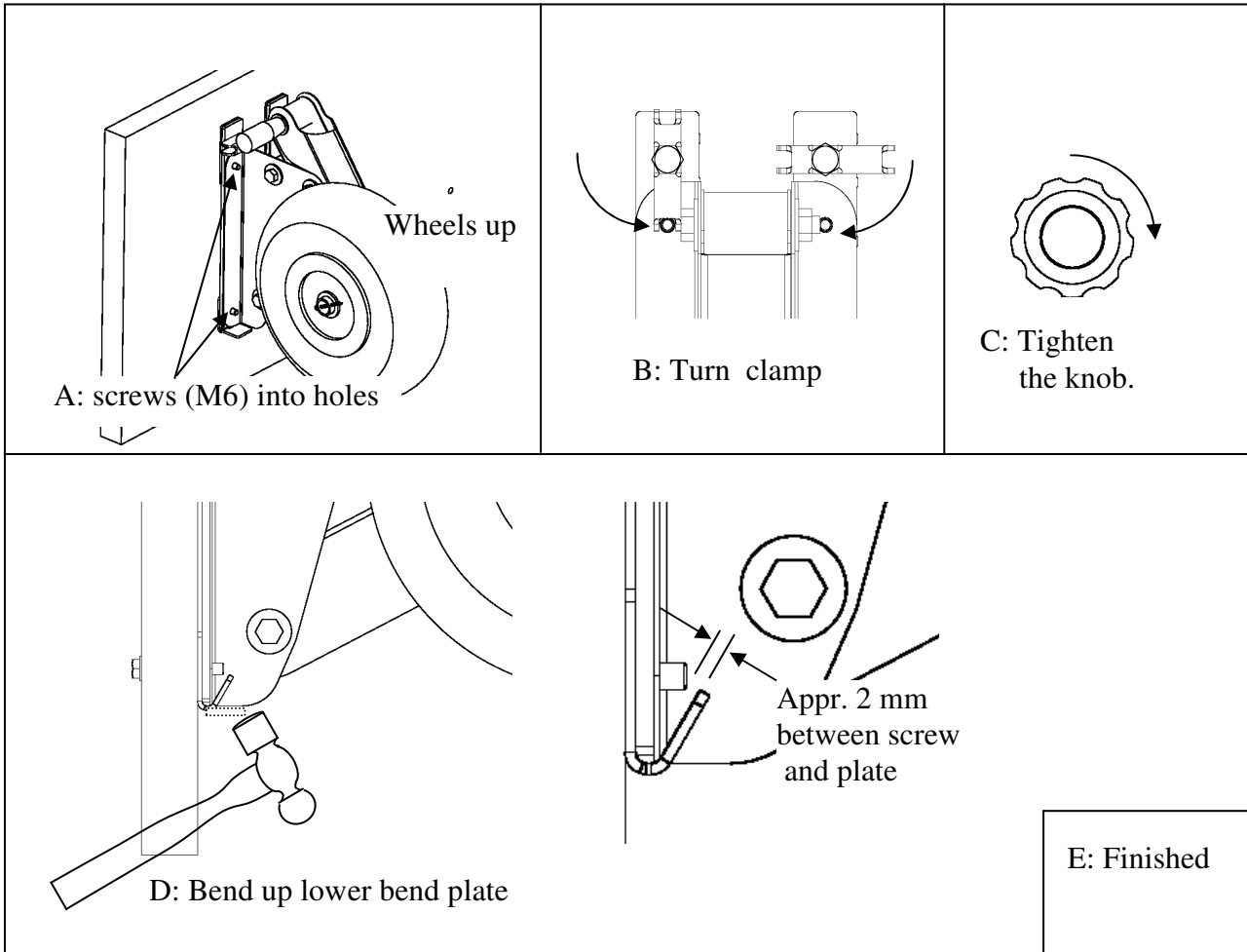
7. Fit the clamp



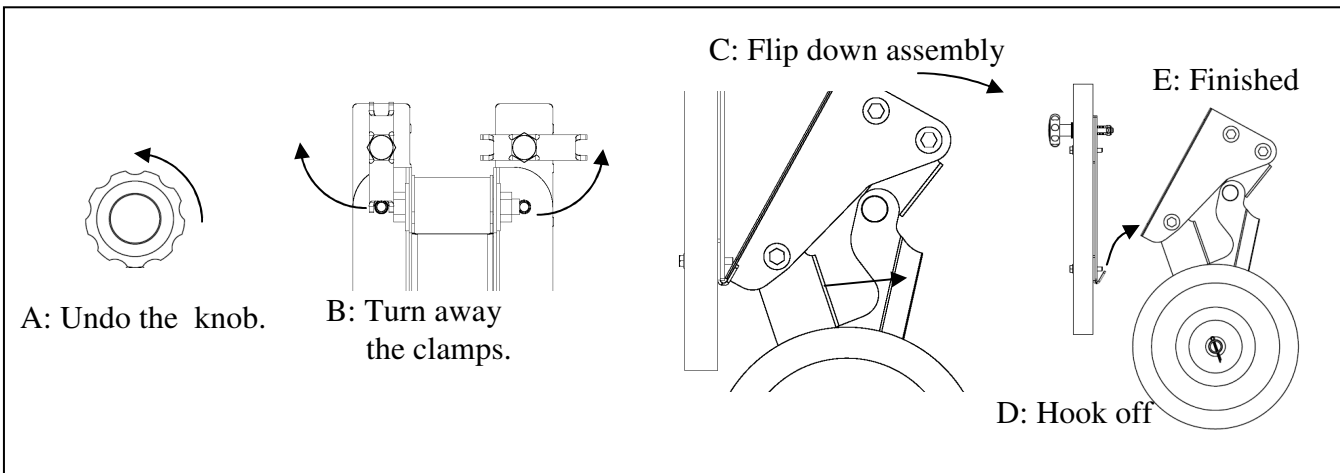
Alternative:
If screw isn't too long,
the nut can instead be
inserted into the knob for
"hidden thread".



8. Fit the wheel assembly.



9. Time to use your quick release. Remove the wheels.



10. Reassembly in reversed order from point no. 9.